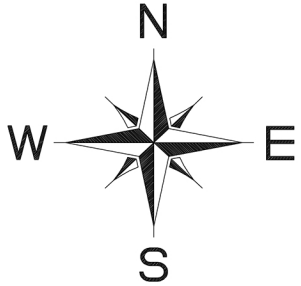


TWO RIVERS COMMONS AMENDED

A MINOR SUBDIVISION OF TWO RIVERS COMMONS
CITY OF SALIDA
CHAFFEE COUNTY, COLORADO

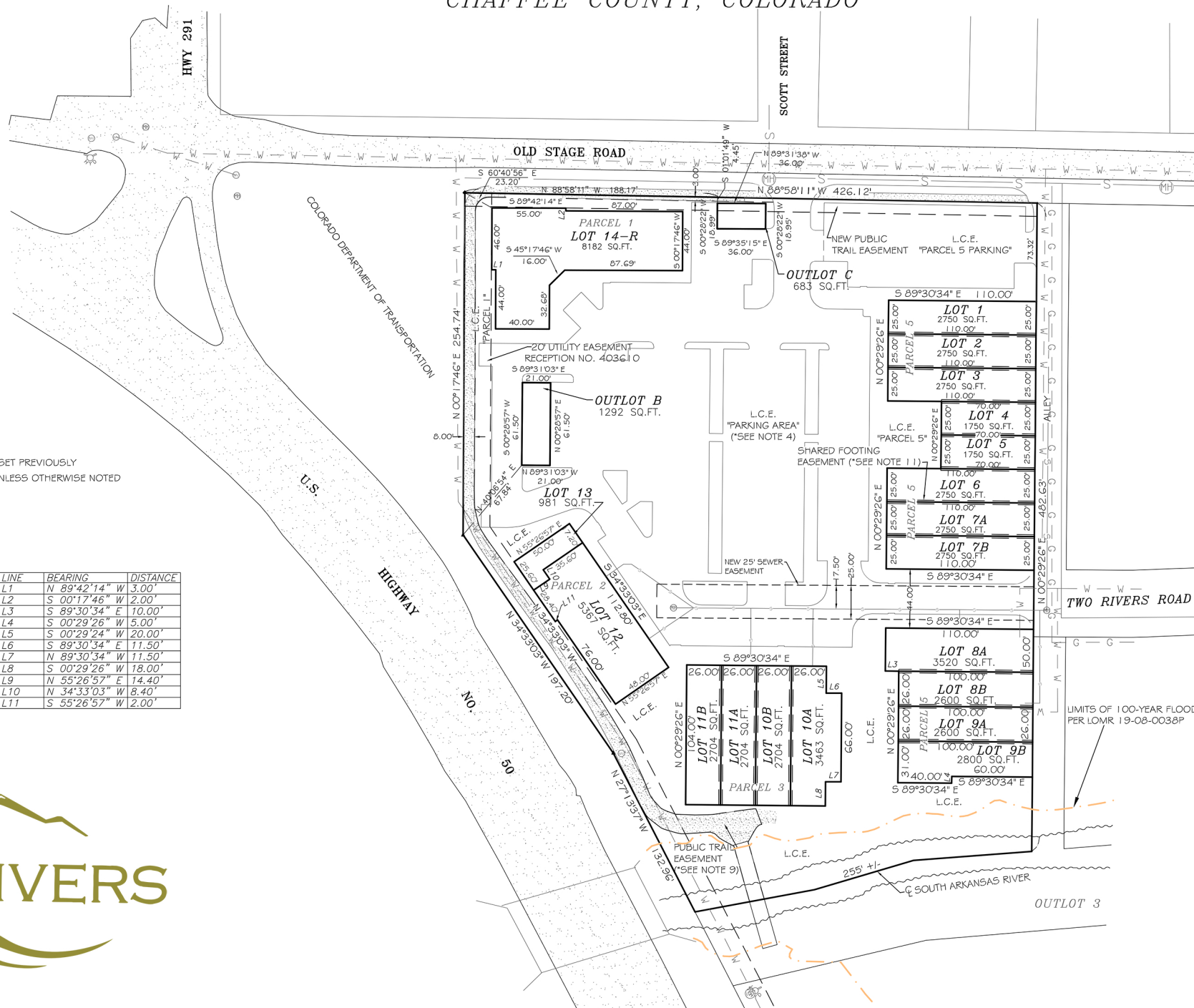


SCALE
1" = 50'

LEGEND

- ◆ FOUND 1 1/2" ALUMINUM CAP LS 37937, SET PREVIOUSLY
- ⊙ FOUND 1 3/4" STEEL WASHER, LS 6753, UNLESS OTHERWISE NOTED
- FOUND 1 1/2" ALUMINUM CAP, LS 16117
- ▲ FOUND 1" ALUMINUM CAP, LS 1776
- ⊕ WATER VALVE
- ⊙ WATER METER
- ⊙ SEWER MAN HOLE
- ⊙ FIRE HYDRANT
- S - S - UNDERGROUND SEWER
- X - X - FENCE
- W - W - UNDERGROUND WATER
- G - G - UNDERGROUND GAS
- ▨ CONCRETE

| LINE | BEARING | DISTANCE |
|------|---------------|----------|
| L1 | N 89°42'14" W | 3.00' |
| L2 | S 00°17'46" W | 2.00' |
| L3 | S 89°30'34" E | 10.00' |
| L4 | S 00°29'26" W | 5.00' |
| L5 | S 00°29'24" W | 20.00' |
| L6 | S 89°30'34" E | 11.50' |
| L7 | N 89°30'34" W | 11.50' |
| L8 | S 00°29'26" W | 18.00' |
| L9 | N 55°26'57" E | 14.40' |
| L10 | N 34°33'03" W | 8.40' |
| L11 | S 55°26'57" W | 2.00' |



LIMITS OF 100-YEAR FLOOD PER LOMR 19-06-0038P